



ROSA-LC 10Gbps 850nm

Features:

Data rate: 10Gb/s
 Wavelength: 850nm
 Operating temperature: -40 to 85°C
 High extinction ratio (ER)
 Receiver sensitivity (RSSI)
 Durable
 LC connector

Applications:

High speed data center
 10G Ethernet

Specifications:

Absolute Maximum Ratings

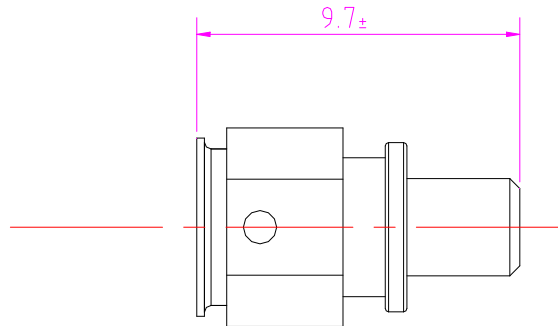
| Parameter | Symbol | Min | Max | Unit |
|-------------------------|--------|-----|-----|------|
| Insertion loss | P | -- | 5 | dB |
| Operating temperature | T | -40 | 85 | |
| Storage temperature | T | -40 | 100 | |
| Lead solder temperature | -- | -- | 260 | |
| Lead solder temperature | -- | -- | 10 | |

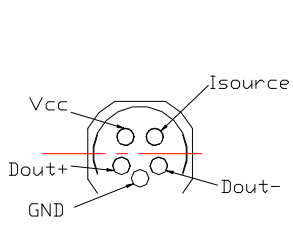
Specifications (T=25°C, unless otherwise noted)

| Parameter | Symbol | Test Conditions | Min. | Typ. | Max. | Unit |
|----------------|-----------------|--|------|------|------|------|
| Supply voltage | V _{cc} | -- | 3.0 | 3.3 | 3.6 | V |
| Supply current | I _{cc} | V _{cc} =3.3V | -- | -- | 40 | A |
| Optical power | | V _{cc} =3.3V | 830 | 850 | 870 | |
| RSSI (dBm) | I _d | V _{cc} =3.3V | -- | -- | 100 | A |
| Optical loss | OL | V _{cc} =3.3V | 3 | -- | -- | dB |
| Sensitivity | S | 10.3125Gb/s, PRBS31, 850nm, ER=4.5dB, BER=10E-12 | -- | -- | -13 | dB |

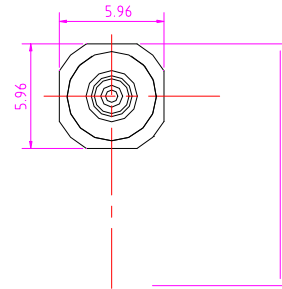
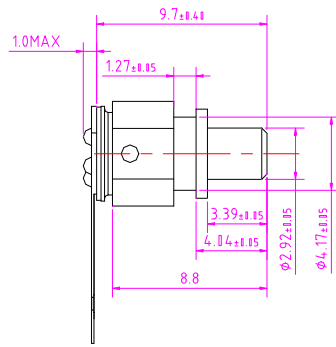


Mechanical Dimension and Pin Assignment:





PAD1
PAD6



| | A | B |
|---|----------------|---------|
| 1 | PAD ASSIGNMENT | |
| 2 | PAD1 | Vcc |
| 3 | PAD2 | GND |
| 4 | PAD3 | DOUT+ |
| 5 | PAD4 | DOUT- |
| 6 | PAD5 | GND |
| 7 | PAD6 | Isource |